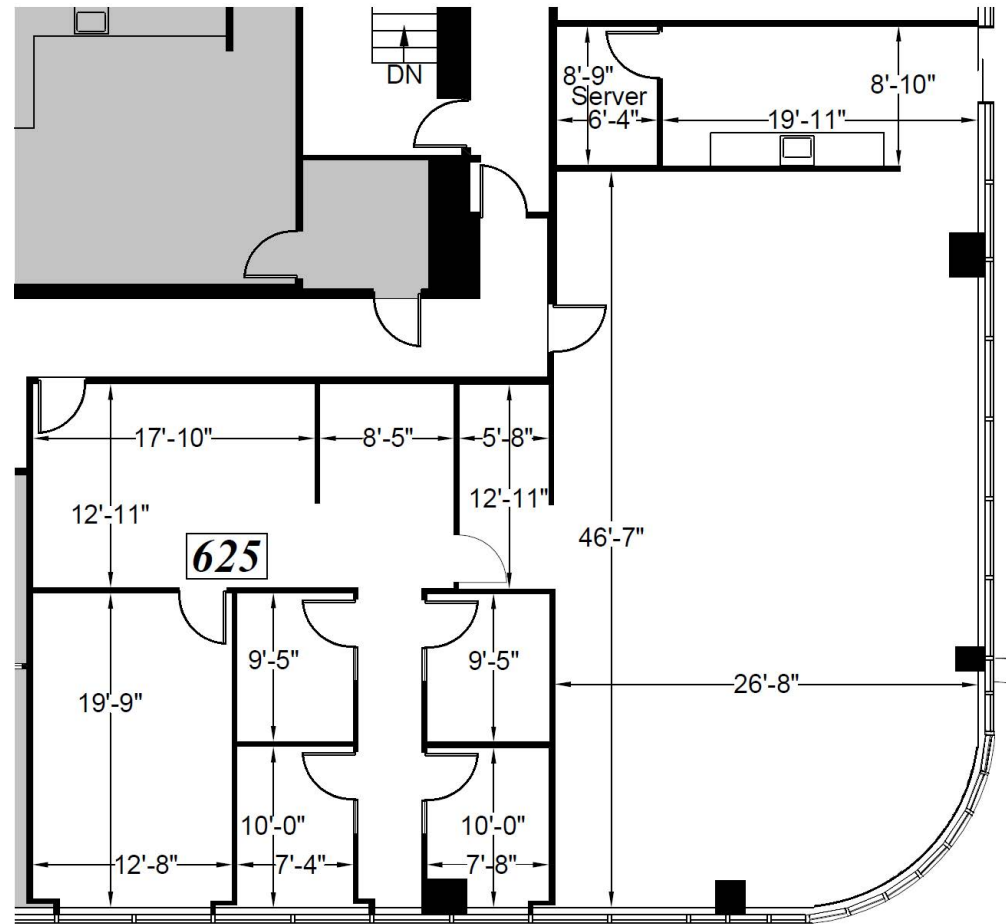
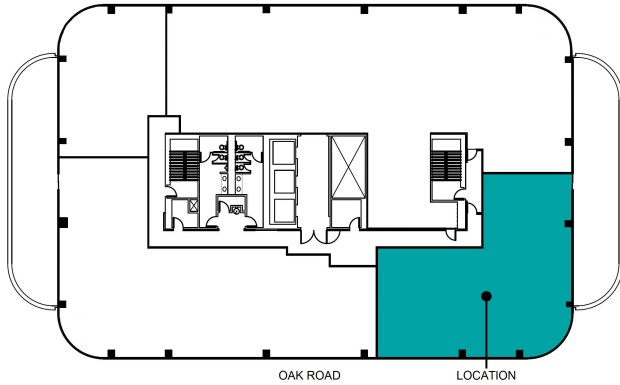


SUITE 625: ±3,247 RSF

Plans not to scale



LEASING INFORMATION

Bob Maderious

Senior Vice President

925.357.2010

bob.maderious@transwestern.com

CA DRE LIC 00616136



2175 N. California Blvd., Suite 415
Walnut Creek, CA 94596

CABROKERLIC. 01263636
T 925.357.2000

www.transwestern.com/walnutcreek