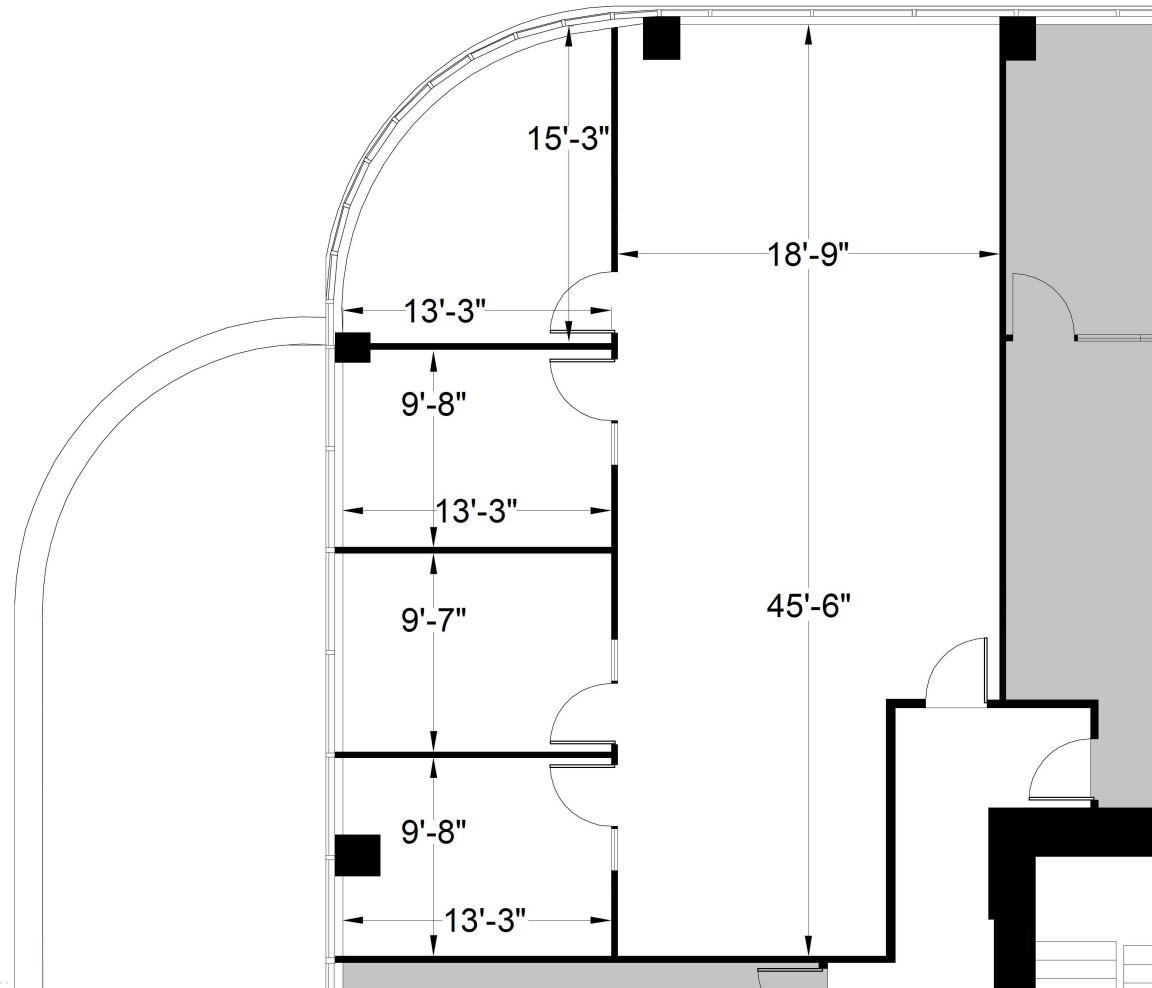
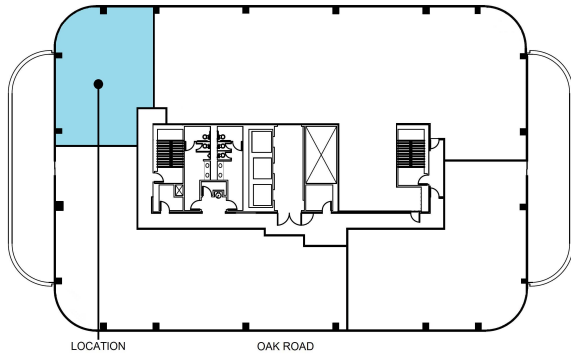


SUITE 675: ±1,749 RSF

Plans not to scale



LEASING INFORMATION

**Bob Maderious**

Senior Vice President

925.357.2010

[bob.maderious@transwestern.com](mailto:bob.maderious@transwestern.com)

CA DRE LIC 00616136



2175 N. California Blvd., Suite 415  
Walnut Creek, CA 94596

CA BROKER LIC. 01263636  
T 925.357.2000

[www.transwestern.com/walnutcreek](http://www.transwestern.com/walnutcreek)